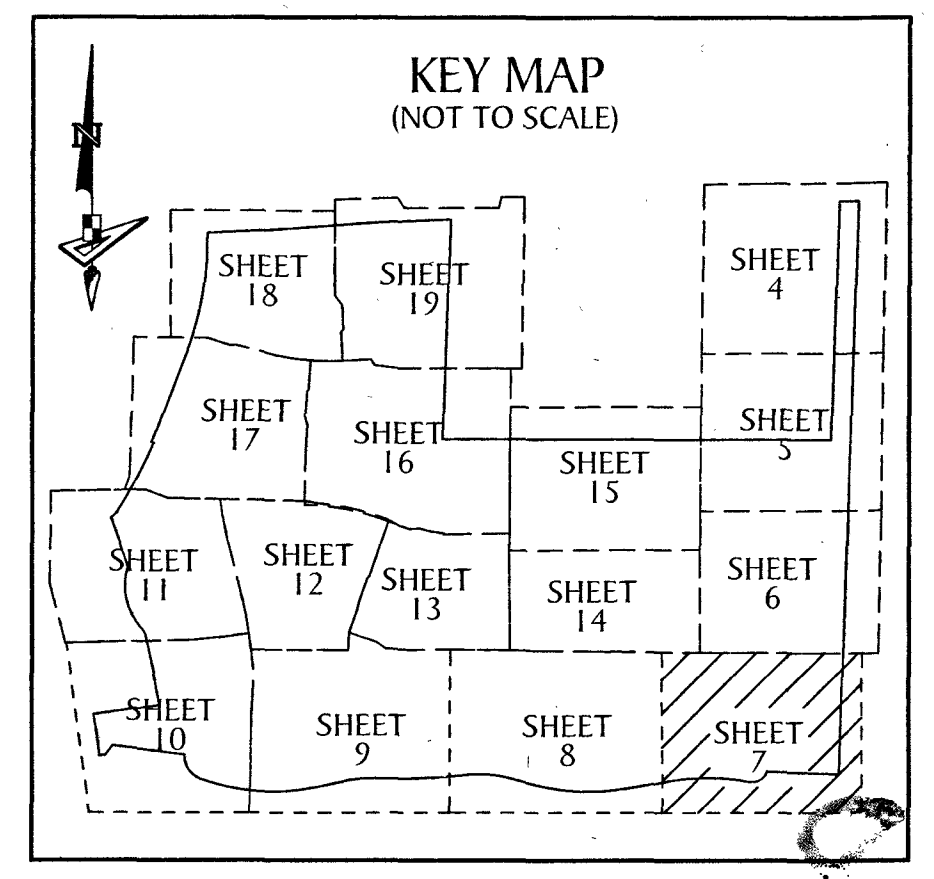


# PINES OF WESTLAKE - PHASE I

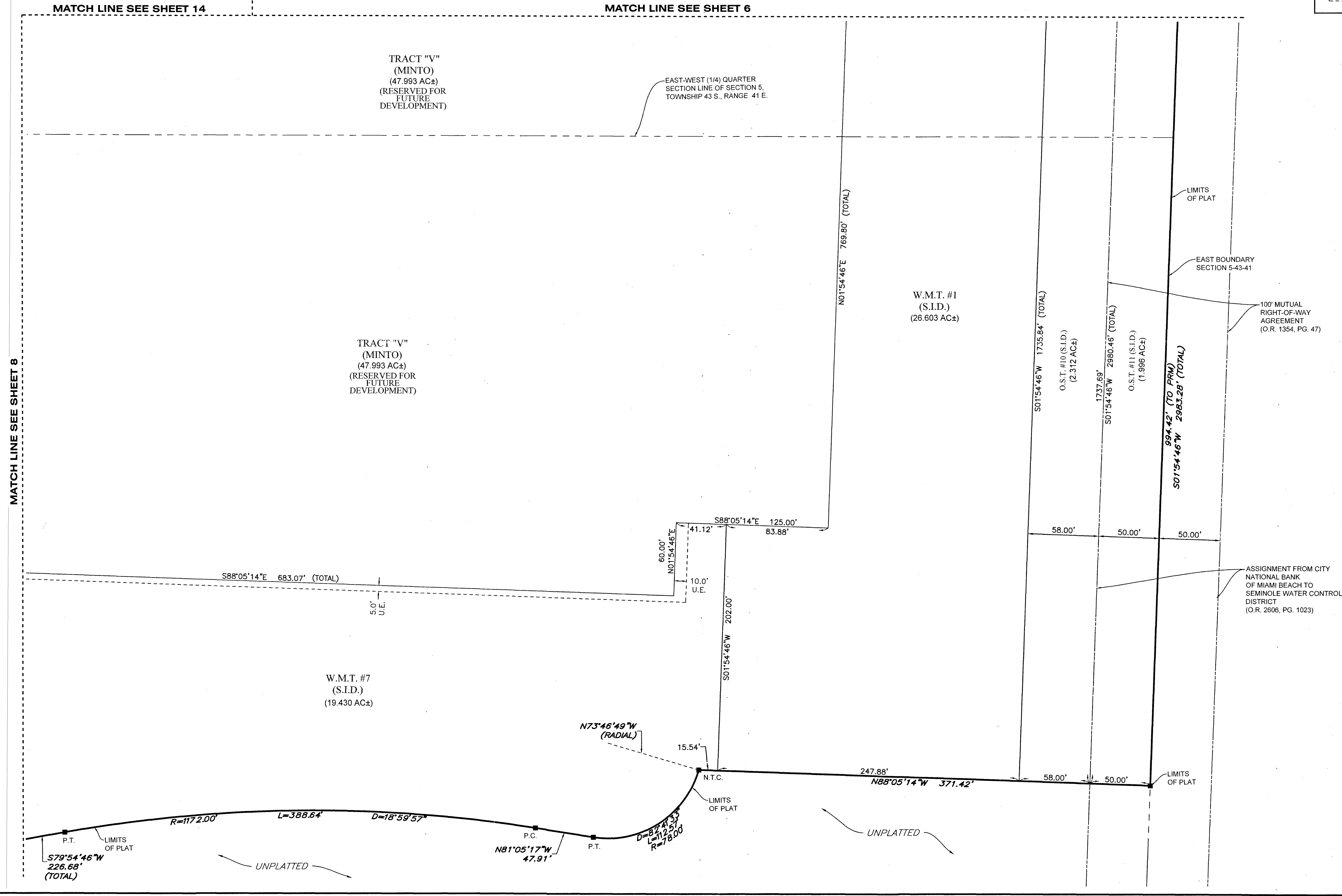
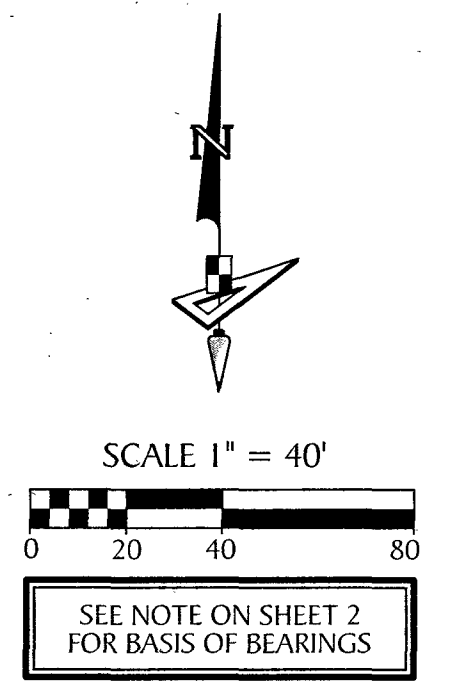
BEING A PORTION OF SECTION 5, TOWNSHIP 43 SOUTH, RANGE 41 EAST,  
CITY OF WESTLAKE, PALM BEACH COUNTY, FLORIDA.

### LEGEND

- |   |  |  |
|---|--|--|
| <p>P.O.B. ----- POINT OF BEGINNING<br/>                 P.O.C. ----- POINT OF COMMENCEMENT<br/>                 P.B. ----- PLAT BOOK<br/>                 D.B. ----- DEED BOOK<br/>                 O.R./O.R.B. ----- OFFICIAL RECORDS BOOK<br/>                 PG./PG(s) ----- PAGE(s)<br/>                 NAD ----- NORTH AMERICAN DATUM<br/>                 W.M.T. ----- WATER MANAGEMENT TRACT<br/>                 O.S.T. ----- OPEN SPACE TRACT<br/>                 P.B.C. ----- PALM BEACH COUNTY<br/>                 U.E. ----- UTILITY EASEMENT<br/>                 D.E. ----- DRAINAGE EASEMENT</p> | <p>L.M.A.E. ----- LAKE MAINTENANCE ACCESS EASEMENT<br/>                 5-43-41 ----- SECTION-TOWNSHIP-RANGE<br/>                 R ----- RADIUS<br/>                 L ----- ARC LENGTH<br/>                 D ----- DELTA ANGLE<br/>                 CB ----- CHORD BEARING<br/>                 C ----- CHORD<br/>                 N.T. ----- NON-TANGENT<br/>                 N.T.C. ----- NON-TANGENT CURVATURE<br/>                 P.C. ----- POINT OF CURVATURE<br/>                 P.T. ----- POINT OF TANGENCY<br/>                 C.C. ----- COMPOUND CURVATURE<br/>                 R.C. ----- REVERSE CURVATURE</p> | <p>R.I. ----- RADIAL INTERSECTION<br/>                 R/W ----- RIGHT-OF-WAY<br/>                 (R) ----- RADIAL<br/>                 (NR) ----- NON-RADIAL<br/>                 HOA ----- HOMEOWNERS ASSOCIATION<br/>                 S.I.D. ----- SEMINOLE IMPROVEMENT DISTRICT<br/>                 PRM ----- PERMANENT REFERENCE MONUMENT<br/>                 ● ----- PERMANENT CONTROL POINT<br/>                 □ ----- FOUND PERMANENT REFERENCE MONUMENT<br/>                 ■ ----- SET 4"x4" CONCRETE MONUMENT WITH 2" ALUMINUM DISK STAMPED "PRM LB 7768"</p> |
|---|--|--|



9



**GeoPoint**  
Surveying, Inc.

4152 W. Blue Heron Blvd. Phone: (561) 444-2720  
 Suite 105 www.geopointsurvey.com  
 Riviera Beach, FL 33404 Licensed Business Number LB 7768

SHEET 7 OF 19 SHEETS